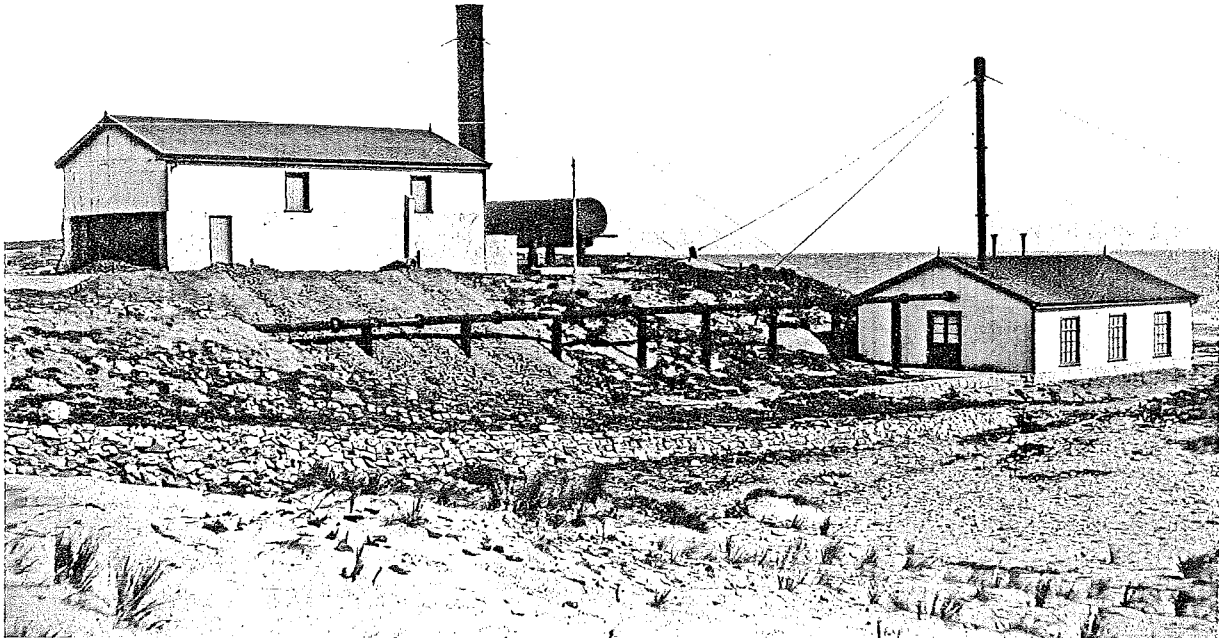


ROSSITER'S POINT PUMPING STATION



Rossiter's Point Pumping Station was erected in 1901 to pump sea water at high tide 3.6 km to Moonta Mines for use in the Cementation Works. The water was conveyed in a 23cm diameter cast iron pipe lined with wood to prevent corrosion. The original 90cm intake pipe can still be seen where it extended 200 metres into the sea.

The water was pumped to a dam at Ryans Enginehouse where it was mixed with sulphuric acid and then distributed to the tops of the large tailing heaps. As it percolated through the tailings it leached residual copper, which was precipitated on scrap iron. This process is explained at the Cementation Works.

The direct-action pumps were originally steam powered and operated until closure of the mines in 1923. The Moonta Copper Recovery Company continued to operate the Cementation Works until 1944. During this period a diesel engine was used to power the Rossiter's Point pumps.